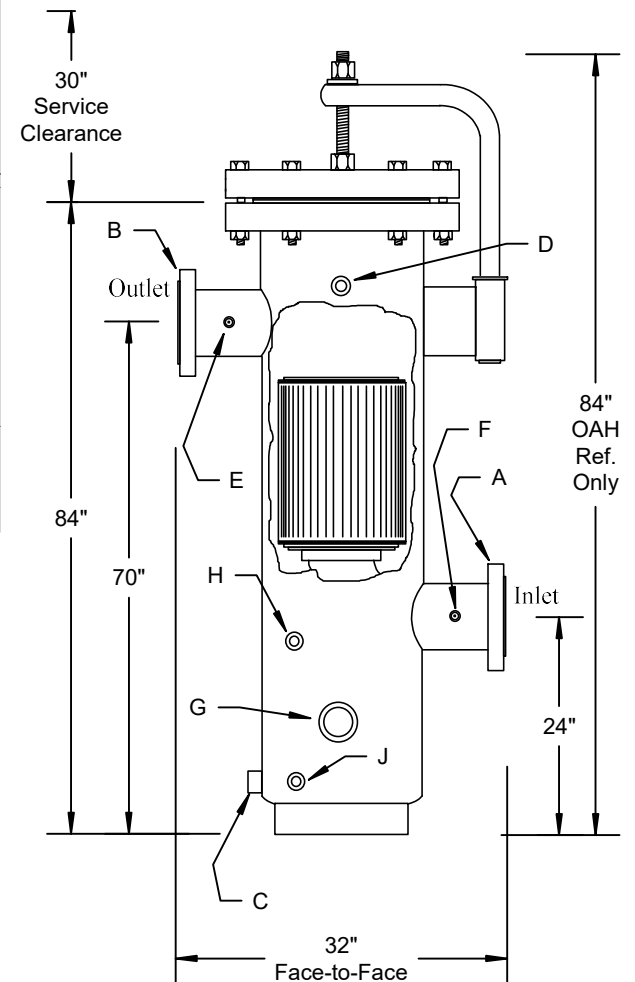


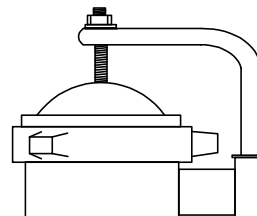
VESSEL DATA SHEET

Design Parameters		Schedule of Openings					
Pressure, Max. at Inlet	285 psi	Service	See Dwg.	Qty.	Size	Rating	Type
Temperature	100 F	Inlet	A	1	10"	150# ANSI	Flange
Corrosion Allow.	0.00"	Outlet	B	1	10"	150# ANSI	Flange
Code Standard	ASME Sect. VIII, Div. 1	Drain	C	1	1"	3000#	Coupling
Stamped?	Optional	Vent	D	1	1"	3000#	Coupling
Operating Parameters		Press. Tap	E	1	1/4"	3000#	Coupling
Pressure, Max.	285 psi	Press. Tap	F	1	1/4"	3000#	Coupling
Temperature	100 F	Float Switch	G	1	2"	3000#	Coupling
Gas Flow Rate	4,400,000 scfh @ 285 psi	Sight Glass	H	1	1/2"	3000#	Coupling
Gas Specific Gravity	0.60	Sight Glass	J	1	1/2"	3000#	Coupling
Vessel Testing		Materials of Construction					
Hydrotest Pressure	428 psi	Shell	SA53B				Thickness
Pneumatic Test Pressure	N/A	Bottom Head	SA234WPB				0.375"
Radiograph	Optional with U-Stamp	In/Out Piping	SA53B				0.375"
Magnetic Particle	Optional with U-Stamp	Flanges	SA105				0.500"
Dye Penetrant	Optional with U-Stamp	Couplings	SA105				ANSI 150#
		Closure Gasket	Spiral Wound Gasket				3000#
		Ring Base	SA53B				0.188"
Filtration Performance		Shipping Information					
Filter Element P/N	(2) #2070K907	Total Weight	1,200#				
Type of Filter Media	Borosilicate Fiberglass						
Retention Rating	0.3 micron						
Efficiency of Retention	99.9%						
No. of Elements	1						
Design Clean Press. Drop	0.33 psid						
Changeout Press. Drop	10 psid						
Closure Specifications							
Type	Blind Flange						
Gasket Type	Fiber Type, #20-150SW						
Type of Lifting Assistance	Davit Arm						
Internal Finish							
Sandblast	Light						
Oil Coat	None						
Glyptol Coat	None						
External Finish							
Sandblast	SP-10 Commercial						
Finish Coat	(2) Coats PPG Grey Enamel Primer/Finish						
Sump Capacity	29 gallons						

Optional Threaded
Quick Opening
Modco Closure



Optional Threaded
Quick Opening
Modco Closure



FilterFab
MANUFACTURING CORPORATION

Model C10-285F Coalescing Filter